



# INDIAN DIGITAL TRADERS

Gst Number: 23AMKPL7694M1ZA

Email Address: [contact@indiandigitaltraders.com](mailto:contact@indiandigitaltraders.com)

Address: S1, 38-A, Sachidanand Nagar, Nizamuddin Road, Bhopal 462022 India

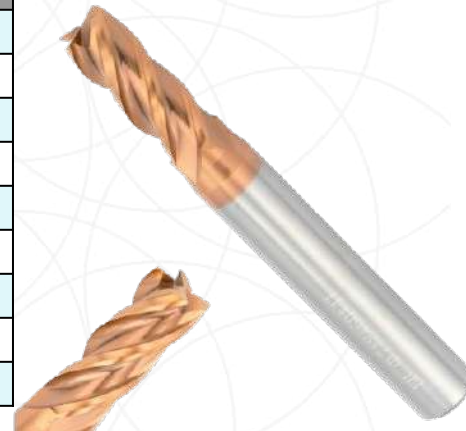
We energetically promote the corporate spirit of “Strive for excellence, amaze the world with innovation, customer first, forge ahead” with the aim of “reviving the national industry”.

Our team adheres to the principle of “customer first” to provide quality products to all our customers.



## ENDMILL & BALLNOSE 55HRC

SIZE	2 & 4 Flute Flat	2 Flute Ballnose	4 Flute Ballnose
STD SIZE			
1*50	90	110	136
1.5*50	90	110	136
2*50	90	110	136
2.5*50	90	110	136
3*50	76	110	136
4*50	90	110	136
5*50	168	210	246
6*50	168	210	246
8*60	288	373	438
10*75	512	642	752
12*75	664	852	998
14*80	1328	1481	1736
75mm LONG SIZE			
3*75	136	163	192
4*75	136	163	192
5*75	241	292	342
6*75	241	292	342
8*75	386	467	547
100mm LONG SIZE			
3*100	155	187	218
4*100	155	187	218
5*100	289	350	410
6*100	289	350	410
8*100	463	560	656
10*100	685	828	971
12*100	955	1108	1300
14*100	1411	1574	1846
16*100	1646	1925	2256
18*100	2238	2496	2927
20*100	2460	2846	3336
25*100	4987	5490	6032
150mm LONG SIZE			
6*150	648	724	848
8*150	994	1108	1300
10*150	1464	1633	1914
12*150	1777	1982	2324
14*150	2562	2857	3350
16*150	3263	3640	4266
18*150	3971	4368	4804
20*150	4445	4957	5812
25*150	6133	6749	7422



## ENDMILL & BALLNOSE 55HRC

SIZE	2 & 4 Flute Flat	2 Flute Ballnose	4 Flute Ballnose
200mm LONG SIZE			
6*200	810	890	979
8*200	1272	1399	1540
10*200	1837	2021	2224
12*200	2413	2654	2922
14*200	3353	3689	4057
16*200	4638	5101	5610
18*200	5250	5774	6352
20*200	5610	6172	6788
25*200	12569	13825	15203
250mm LONG SIZE			
6*250	1448	1594	1753
8*250	2174	2392	2632
10*250	3092	3402	3742
12*250	4192	4612	5072
14*250	5668	6234	6858
16*250	6859	7546	8300
18*250	8498	9348	10284
20*250	10032	11035	12138
25*250	17668	19434	21378
300mm LONG SIZE			
6*300	2114	2326	2558
8*300	3457	3803	4183
10*300	4789	5268	5795
12*300	6386	7025	7727
14*300	8131	8945	9839
16*300	10067	11074	12181
18*300	12222	13444	14788
20*300	14526	15979	17578
25*300	21439	23584	25942
6mm Shank			
1*6*50	206	272	304
1.5*6*50	206	272	304
2*6*50	206	272	304
2.5*6*50	206	272	304
3*6*50	206	272	304
4*6*50	206	272	304
5*6*50	206	272	304



## ENDMILL & BALLNOSE 65HRC

SIZE	2 & 4 Flute Flat	2 Flute Ballnose	4 Flute Ballnose
STD SIZE			
1*50	178	193	213
1.5*50	178	193	213
2*50	178	193	213
2.5*50	178	193	213
3*50	178	193	213
4*50	178	193	213
5*50	324	350	384
6*50	324	350	384
8*60	550	595	654
10*75	929	1003	1104
12*75	1279	1380	1518
14*80	2331	2517	2769
75mm LONG SIZE			
3*75	240	260	286
4*75	240	260	286
5*75	438	473	521
6*75	438	473	521
8*75	689	743	818
100mm LONG SIZE			
3*100	290	315	346
4*100	290	315	346
5*100	541	582	641
6*100	541	582	641
8*100	860	929	1022
10*100	1249	1348	1482
12*100	1730	1868	2055
14*100	2331	2517	2769
16*100	2943	3179	3496
18*100	3625	3915	4306
20*100	4378	4727	5199
25*100	12060	12060	13266
150mm LONG SIZE			
6*150	892	964	1060
8*150	1397	1509	1659
10*150	1960	2116	2328
12*150	2648	2861	3148
14*150	3513	3795	4175
16*150	4434	4789	5268
18*150	5460	5896	6486
20*150	6590	7117	7829



## ENDMILL & BALLNOSE 65HRC

SIZE	2 & 4 Flute Flat	2 Flute Ballnose	4 Flute Ballnose
200mm LONG SIZE			
6*200	1296	1296	1426
8*200	2044	2044	2247
10*200	2953	2953	3249
12*200	4081	4081	4491
14*200	5326	5326	5858
16*200	6728	6728	7401
18*200	8296	8296	9123
20*200	10022	10022	11025
25*200	15274	15274	16802
250mm LONG SIZE			
6*250	1661	1661	1825
8*250	2608	2608	2868
10*250	3757	3757	4133
12*250	5182	5183	5702
14*250	6749	6749	7426
16*250	8518	8518	9369
18*250	10488	10488	11538
20*250	12662	12662	13927
25*250	19259	19259	21186
300mm LONG SIZE			
6*300	2500	2500	2751
8*300	3923	3923	4316
10*300	5652	5652	6217
12*300	7795	7795	8572
14*300	10145	10145	11160
16*300	12801	12801	14079
18*300	15758	15758	17336
20*300	19022	19022	20923
25*300	28928	28928	31823



## Long Neck Endmill Ballnose

SIZE	2 & 4 Flute Flat	2 Flute Ballnose	4 Flute Ballnose
1*6*50	167	176	210
1*8*50	167	176	210
1*10*50	167	176	210
1*12*50	167	176	210
1*16*50	167	176	210
1*20*50	167	176	210
1.5*6*50	167	176	210
1.5*8*50	167	176	210
1.5*10*50	167	176	210
1.5*12*50	167	176	210
1.5*16*50	167	176	210
1.5*20*50	167	176	210
2*6*50	167	176	210
2*8*50	167	176	210
2*10*50	167	176	210
2*12*50	167	176	210
2*16*50	167	176	210
2*20*50	167	176	210
2.5*6*50	167	176	210
2.5*8*50	167	176	210
2.5*10*50	167	176	210
2.5*12*50	167	176	210
2.5*16*50	167	176	210
2.5*20*50	167	176	210



## UNCOATED ENDMILLS AL

SIZE	Description	3Flute Flat
1*50	Uncoated for AL	166
2*50	Uncoated for AL	166
3*50	Uncoated for AL	166
4*50	Uncoated for AL	197
4*75	Uncoated for AL	268
5*50	Uncoated for AL	362
5*75	Uncoated for AL	268
6*50	Uncoated for AL	362
5*75	Uncoated for AL	444
8*60	Uncoated for AL	578
8*75	Uncoated for AL	725
10*75	Uncoated for AL	748
10*100	Uncoated for AL	1066
12*75	Uncoated for AL	1048
12*100	Uncoated for AL	1420



## CORNER RADIUS

SIZE	Description	R0.5	R1
3*50	4 Flute Endmill 55HRC	166	166
4*50	4 Flute Endmill 55HRC	166	166
4*75	4 Flute Endmill 55HRC	197	197
5*50	4 Flute Endmill 55HRC	268	268
5*75	4 Flute Endmill 55HRC	362	362
6*50	4 Flute Endmill 55HRC	268	268
6*75	4 Flute Endmill 55HRC	362	362
8*60	4 Flute Endmill 55HRC	444	444
8*75	4 Flute Endmill 55HRC	578	578
8*100	4 Flute Endmill 55HRC	725	725
10*75	4 Flute Endmill 55HRC	748	748
10*100	4 Flute Endmill 55HRC	1066	1066
12*75	4 Flute Endmill 55HRC	1048	1048
12*100	4 Flute Endmill 55HRC	1420	1420





SC DRILL (STUB) BLACK COATING

SIZE	DESCRIPTION	RATE
3*16*46	DIA*CL*OAL	89
3.2*18*49	DIA*CL*OAL	137
3.3*18*49	DIA*CL*OAL	137
3.5*20*52	DIA*CL*OAL	144
3.8*22*55	DIA*CL*OAL	151
4*22*55	DIA*CL*OAL	151
4.2*22*55	DIA*CL*OAL	174
4.5*24*58	DIA*CL*OAL	192
5*26*62	DIA*CL*OAL	220
5.1*26*62	DIA*CL*OAL	220
5.2*26*62	DIA*CL*OAL	279
5.5*28*66	DIA*CL*OAL	296
6*28*66	DIA*CL*OAL	296
6.2*31*70	DIA*CL*OAL	382
6.5*31*70	DIA*CL*OAL	382
6.8*34*74	DIA*CL*OAL	437
7*34*74	DIA*CL*OAL	437
7.5*34*74	DIA*CL*OAL	460
8*37*79	DIA*CL*OAL	568
8.5*37*79	DIA*CL*OAL	568
10*43*89	DIA*CL*OAL	873
10.2*43*89	DIA*CL*OAL	983
10.5*43*89	DIA*CL*OAL	1018
13*110*160	DIA*CL*OAL	1858
14*51*102	DIA*CL*OAL	2008



SC DRILL (JOBBER) BLACK COATING

SIZE	DESCRIPTION	RATE
2*24*49	DIA*CL*OAL	71
2.2*27*53	DIA*CL*OAL	91
2.5*30*57	DIA*CL*OAL	93
3*33*61	DIA*CL*OAL	125
3.2*36*65	DIA*CL*OAL	170
3.3*36*65	DIA*CL*OAL	170
3.5*39*70	DIA*CL*OAL	175
3.8*43*75	DIA*CL*OAL	197
4*43*75	DIA*CL*OAL	197
4.2*43*75	DIA*CL*OAL	251
5*52*85	DIA*CL*OAL	304
5.1*52*85	DIA*CL*OAL	304
5.2*54*90	DIA*CL*OAL	319
5.5*57*90	DIA*CL*OAL	407
6*57*90	DIA*CL*OAL	407
6.2*63*100	DIA*CL*OAL	590
6.5*63*100	DIA*CL*OAL	590
6.8*63*100	DIA*CL*OAL	621
7*69*110	DIA*CL*OAL	621
7.5*69*110	DIA*CL*OAL	800
8*75*120	DIA*CL*OAL	843
8.5*75*120	DIA*CL*OAL	929
9*80*125	DIA*CL*OAL	1236
10*87*130	DIA*CL*OAL	1918
10.5*87*130	DIA*CL*OAL	2001
11*94*140	DIA*CL*OAL	2076
11.5*94*140	DIA*CL*OAL	2214
12*101*150	DIA*CL*OAL	2277
12.5*101*150	DIA*CL*OAL	2530
13*110*160	DIA*CL*OAL	2657
14*120*165	DIA*CL*OAL	3537



SC DRILL (JOBBER) COPPER COATING

SIZE	DESCRIPTION	RATE
2*24*49	DIA*CL*OAL	86
2.2*27*53	DIA*CL*OAL	107
2.5*30*57	DIA*CL*OAL	109
3*33*61	DIA*CL*OAL	143
3.2*36*65	DIA*CL*OAL	193
3.3*36*65	DIA*CL*OAL	193
3.5*39*70	DIA*CL*OAL	199
3.8*43*75	DIA*CL*OAL	221
4*43*75	DIA*CL*OAL	221
4.2*43*75	DIA*CL*OAL	224
4.5*47*80	DIA*CL*OAL	282
5*52*85	DIA*CL*OAL	336
5.1*52*85	DIA*CL*OAL	340
5.2*54*90	DIA*CL*OAL	357
5.5*57*90	DIA*CL*OAL	449
6*57*90	DIA*CL*OAL	449
6.2*63*100	DIA*CL*OAL	642
6.5*63*100	DIA*CL*OAL	642
6.8*63*100	DIA*CL*OAL	675
7*69*110	DIA*CL*OAL	675
7.5*69*110	DIA*CL*OAL	834
8*75*120	DIA*CL*OAL	910
8.5*75*120	DIA*CL*OAL	1003
9*80*125	DIA*CL*OAL	1274
10*87*130	DIA*CL*OAL	1541
10.2*87*130	DIA*CL*OAL	2038
10.5*87*130	DIA*CL*OAL	2038
11*94*140	DIA*CL*OAL	2122
11.5*94*140	DIA*CL*OAL	2498
12*101*150	DIA*CL*OAL	2592
12.5*101*150	DIA*CL*OAL	2805
13*110*160	DIA*CL*OAL	3044
14*120*165	DIA*CL*OAL	3904



# TAPS

## HSS-E M35

SIZE	Type	Description	Rate
M2.5	SFT/SPPT	M35 HSS-E TiN COATING	176
M3	SFT/SPPT	M35 HSS-E TiN COATING	115
M4	SFT/SPPT	M35 HSS-E TiN COATING	115
M5	SFT/SPPT	M35 HSS-E TiN COATING	127
M6	SFT/SPPT	M35 HSS-E TiN COATING	153
M8	SFT/SPPT	M35 HSS-E TiN COATING	198
M10	SFT/SPPT	M35 HSS-E TiN COATING	238
M12	SFT/SPPT	M35 HSS-E TiN COATING	321
M16	SFT/SPPT	M35 HSS-E TiN COATING	453
1/4BSW	SFT/SPPT	M35 HSS-E TiN COATING	206
3/8BSW	SFT/SPPT	M35 HSS-E TiN COATING	297
1/2BSW	SFT/SPPT	M35 HSS-E TiN COATING	549

## HSS M2 HIGH QUALITY

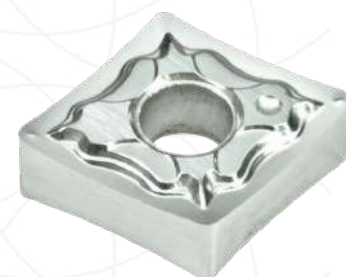
M2*0.4	SFT/SPPT	M2 HSS TiN COATING	69
M2.5*0.45	SFT/SPPT	M2 HSS TiN COATING	69
M3*0.5	SFT/SPPT	M2 HSS TiN COATING	69
M4*0.7	SFT/SPPT	M2 HSS TiN COATING	69
M5*0.8	SFT/SPPT	M2 HSS TiN COATING	78
M6*1	SFT/SPPT	M2 HSS TiN COATING	101
M8*1.25	SFT/SPPT	M2 HSS TiN COATING	150
M10*1.5	SFT/SPPT	M2 HSS TiN COATING	192
M12*1.75	SFT/SPPT	M2 HSS TiN COATING	248



## ALUMINIUM INSERTS

### ALUMINIUM GRADE

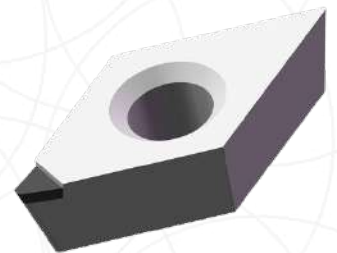
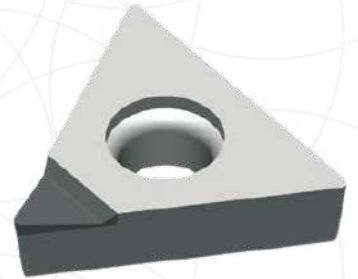
Item	Description	Rates
SEHT1204	Aluminium Insert	86
TCGT 090202/4/8	Aluminium Insert	69
TCGT 110202/4/8	Aluminium Insert	69
TCGT 16T302/4/8	Aluminium Insert	86
CCGT 060202/4/8	Aluminium Insert	63
CCGT 09T302/4/8	Aluminium Insert	69
CCGT 120402/4/8	Aluminium Insert	98
DCGT 070202/4/8	Aluminium Insert	63
DCGT 11T302/4/8	Aluminium Insert	69
SCGT 09T302/4/8	Aluminium Insert	69
SCGT 120402/4/8	Aluminium Insert	98
APKT 1003	Aluminium Insert	69
APKT 113502/4	Aluminium Insert	69
APKT 160404/8	Aluminium Insert	86
APGT 160404/8	Aluminium Insert	86
RPGT 07/08/10	Aluminium Insert	81
RPGT 1204	Aluminium Insert	92
VCGT 110302/4/8	Aluminium Insert	69
VCGT 160402	Aluminium Insert	98
VCGT 220516/30	Aluminium Insert	288
TNMG 160402/4/8	Aluminium Insert	98
CNMG 120402/4/8	Aluminium Insert	109
WNMG 080402/4/8	Aluminium Insert	109
DNMG 150604/8	Aluminium Insert	173
SNMG 120402/4/8	Aluminium Insert	127
VNMG 160404/8	Aluminium Insert	127
WNMU 080404/8	Aluminium Insert	173
MGMN150/200/300	Aluminium Insert	81
MGMN 400	Aluminium Insert	92
MGMN 500	Aluminium Insert	115
MRMN 150/200/300	Aluminium Insert	81
MRMN 400	Aluminium Insert	92
MRMN 500	Aluminium Insert	115
WCMT 03/04	Aluminium Insert	81
WCMT 05/06	Aluminium Insert	98
WCMT 08	Aluminium Insert	121



## PCD INSERTS

High Quality

Item	Description	Rates
PCD VBGT160408	High Quality	288
PCD VBGT160404	High Quality	288
PCD TNGA160404	High Quality	288
PCD TNGA160408	High Quality	288
PCD TCGT16T304	High Quality	288
PCD TCGT16T308	High Quality	288
PCD TCGT110204	High Quality	288
PCD TCGT110208	High Quality	288
PCD TCGT090204	High Quality	288
PCD MGMN200	High Quality	288
PCD MGMN300	High Quality	288
PCD MGMN400	High Quality	288
PCD MGMN500	High Quality	288
PCD DCMT070204	High Quality	288
PCD DCMT070208	High Quality	288
PCD DCMT11T304	High Quality	288
PCD DCMT11T308	High Quality	288
PCD CNGA120408	High Quality	288
PCD CNGA120404	High Quality	288
PCD CNGA120412	High Quality	288
PCD CCGT09T304	High Quality	288
PCD CCGT09T308	High Quality	288
PCD CCGT060202	High Quality	288
PCD CCGT060204	High Quality	288
PCD CCGT060208	High Quality	288
PCD APKT1135	High Quality	288
PCD APKT140404	High Quality	288
PCD APKT140408	High Quality	288
PCD 16ER AG60	High Quality	288



**ZCC.CT INSERTS****STEEL GRADE**

Item	Description	Rates
APMT 1135 YBG 202	Steel Grade	60
APMT 1135 YBG 205	Steel Grade	60
APMT 1604 YBG 202	Steel Grade	75
APMT 1604 YBG 205	Steel Grade	75
RDKW 10T3 YBG 205	Steel Grade	63
RDKW 10T3 YBG 202	Steel Grade	63
RDKW 1204 YBG 202	Steel Grade	68
RDKW 1204 YBG 205	Steel Grade	68
APKT 11T308 YBG 202	Steel Grade	81
APKT 160408 YBG 202	Steel Grade	141
APKT 11T308 YBG 205	Steel Grade	81
APKT 160408 YBG 205	Steel Grade	136
RDKW 0802MO YBG 202	Steel Grade	58
RDKW 0802MO YBG 205	Steel Grade	52
RDKW 1605MO YBG 202	Steel Grade	141
RDKW 1605MO YBG 205	Steel Grade	141

**CDBP INSERTS****STEEL GRADE**

Item	Description	Rates
SPMG 050204 ZV BPG20B	Steel Grade	66
SPMG 060204 ZV BPG20B	Steel Grade	66
SPMG 07T308 ZV BPG20B	Steel Grade	83
SPMG 090408 ZV BPG20B	Steel Grade	99
SPMG 110408 ZV BPG20B	Steel Grade	116
SPMG 140512 ZV BPG20B	Steel Grade	154
TNMG 160408 FX BPS101	Steel Grade	99
TNMG 160412 FX BPS101	Steel Grade	99
TDC2 BPG20B	Steel Grade	95
TDC3 BPG20B	Steel Grade	105
TDC4 BPG20B	Steel Grade	121
TDT2 BPG20B	Steel Grade	95
TDT3 BPG20B	Steel Grade	105
TDT4 BPG20B	Steel Grade	132
DNMG 150608 TM BPS251	Steel Grade	165
VNMG 160408 TM BPS251	Steel Grade	132

## YOUNIO INSERTS

### STEEL GRADE

Item	Description	Rates
YOUNIO LNMU 0303	STEEL	63
YOUNIO SPMG 05	STEEL	75
YOUNIO SPMG 06	STEEL	98
YOUNIO SPMG 07	STEEL	115
YOUNIO SPMG 09	STEEL	132
YOUNIO SPMG 11	STEEL	184
YOUNIO WCMT 03	STEEL	75
YOUNIO WCMT 04	STEEL	98
YOUNIO WCMT 05	STEEL	115
YOUNIO WCMT 06	STEEL	161
YOUNIO TNMG 160404	STEEL	98
YOUNIO TNMG 160408	STEEL	109
YOUNIO TNMG 160412	STEEL	109
YOUNIO CNMG 120404	STEEL	127
YOUNIO CNMG 120408	STEEL	161
YOUNIO CNMG 120412	STEEL	61
YOUNIO WNMG 080404	STEEL	72
YOUNIO WNMG 080408	STEEL	61
YOUNIO WNMG 080412	STEEL	83
YOUNIO VNMG 160404	STEEL	61
YOUNIO VNMG 160408	STEEL	98
YOUNIO VNMG 160412	STEEL	106
YOUNIO CCMT 060204	STEEL	138
YOUNIO CCMT 060208	STEEL	81
YOUNIO CCMT 09T304	STEEL	81
YOUNIO CCMT 09T308	STEEL	242



# HADSTO INSERTS

STEEL/SS GRADE

Item	Description	Rates
APMT 1135 FM HS5120	Black Coating	66
APMT 1135 FM HS5130	Copper Coating	66
APMT 1605 FM HS5120	Black Coating	83
APMT 1605 FM HS5130	Copper Coating	83
RDMW 1204 FM HS5120	Black Coating	77
RDMW 1204 FM HS5130	Copper Coating	77
RPMT 1204 FM HS5120	Black Coating	77
RPMT 1204 FM HS5130	Copper Coating	77
TNMG 160408/12 BM HS7225	Copper Coating	116
TNMG 160408/12 BM HS7125	Black Coating	116
TNMG 160408/12 BF HS7225	Copper Coating	116
TNMG 160408/12 BF HS7125	Black Coating	116
MGMN 150/200 G HS7225	Copper Coating	94
MGMN 300 G HS7225	Copper Coating	94
MGMN 400 G HS7225	Copper Coating	110
TDC2 HS7225	Copper Coating	116
TDC3 HS7225	Copper Coating	116
TDC4 HS7225	Copper Coating	127
16 ER/IR HS5130	Black Coating	132

# TAEGUTEC INSERTS

## CERMET GRADE

Item	Description	Rates
TNMG 160404R VF CT3000	CERMET INSERTS	83
TNMG 160408R VF CT3000	CERMET INSERTS	83
TNMG 160404L VF CT3000	CERMET INSERTS	83
TNMG 160408L VF CT3000	CERMET INSERTS	83
TNMG 160404 MT CT3000	CERMET INSERTS	83
TNMG 160408 MT CT3000	CERMET INSERTS	83
TCMT110204 MT CT3000	CERMET INSERTS	83
TCMT110208 MT CT3000	CERMET INSERTS	83
TCMT16T308 MT CT3000	CERMET INSERTS	99
TCMT16T304 MT CT3000	CERMET INSERTS	99
CCMT 060204 MT CT3000	CERMET INSERTS	72
CCMT 060208 MT CT3000	CERMET INSERTS	72
DCMT 070204 MT CT3000	CERMET INSERTS	72
DCMT 070208 MT CT3000	CERMET INSERTS	72
DCMT11T304 MT CT3000	CERMET INSERTS	77
DCMT11T308 MT CT3000	CERMET INSERTS	77
CCMT 060204 FG CT3000	CERMET INSERTS	66
CCMT 060208 FG CT3000	CERMET INSERTS	66
CCMT 09T304 FG CT3000	CERMET INSERTS	72
CCMT 09T308 FG CT3000	CERMET INSERTS	72
TNMG160404 FG CT3000	CERMET INSERTS	72
TNMG160408 FG CT3000	CERMET INSERTS	72
CCMT 060204 FG PV3010	CERMET INSERTS	72
CCMT 060208 FG PV3010	CERMET INSERTS	72
CCMT 09T304 FG PV3010	CERMET INSERTS	77
CCMT 09T308 FG PV3010	CERMET INSERTS	77
TNMG160404 FG PV3010	CERMET INSERTS	83
TNMG160408 FG PV3010	CERMET INSERTS	83

## STEEL GRADE

SPMG 050204 DG TT9030	CARBIDE INSERTS	72
SPMG 060204 DG TT9030	CARBIDE INSERTS	72
SPMG 07T308 DG TT9030	CARBIDE INSERTS	89
SPMG 090408 DG TT9030	CARBIDE INSERTS	105
SPMG 110408 DG TT9030	CARBIDE INSERTS	116
TDC2 TT9030	CARBIDE INSERTS	66
TDC3 TT9030	CARBIDE INSERTS	72
TDC4 TT9030	CARBIDE INSERTS	77
TDC2 TT9080	CARBIDE INSERTS	66
TDC3 TT9080	CARBIDE INSERTS	72
TDC4 TT9080	CARBIDE INSERTS	77
TDC2 TT7220	CARBIDE INSERTS	66
TDC3 TT7220	CARBIDE INSERTS	72
TDC4 TT7220	CARBIDE INSERTS	77

# DESKAR INSERTS

## CERMET GRADE

Item	Description	Rates
TNMG 160404/08/12 CQ LF9018	MS GRADE (Single Coating)	77
WNMG 080404/08/12 CQ LF9018	MS GRADE (Single Coating)	86
CNMG 120404/08/12 CQ LF9018	MS GRADE (Single Coating)	86
TNMG 160404/08/12 TM LF9018	MS GRADE (Single Coating)	77
WNMG 080404/08/12 TM LF9018	MS GRADE (Single Coating)	86
CNMG 120404/08/12 TM LF9018	MS GRADE (Single Coating)	86
DNMG 150608/12 PM LF9018	STEEL GRADE (Double Coating)	138
VNMG 160408/12 TM LF9018	STEEL GRADE (Double Coating)	116
TNMG 160404/08/12 CQ LF9218	STEEL GRADE (Double Coating)	86
WNMG 080404/08/12 CQ LF9218	STEEL GRADE (Double Coating)	97
CNMG 120404/08/12 CQ LF9218	STEEL GRADE (Double Coating)	97
TNMG 160404/08/12 TM LF9218	STEEL GRADE (Double Coating)	86
WNMG 080404/08/12 TM LF9218	STEEL GRADE (Double Coating)	97
CNMG 120404/08/12 TM LF9218	STEEL GRADE (Double Coating)	97
DNMG 150608/12 PM LF9218	STEEL GRADE (Double Coating)	149
VNMG 160408/12 TM LF9218	STEEL GRADE (Double Coating)	127
SPMG 050204/06 TG LF6018/6118	Universal Grade (Copper Coating)	55
SPMG 07T308 TG LF6018/6118	Universal Grade (Copper Coating)	73
SPMG 090408 TG LF6018/6118	Universal Grade (Copper Coating)	86
SPMG 110408 TG LF6018/6118	Universal Grade (Copper Coating)	101
SPMG 140512 TG LF6018/6118	Universal Grade (Copper Coating)	121
MGMN 150/200 LF6018/6118	Universal Grade (Copper Coating)	55
MGMN 300 LF6018/6118	Universal Grade (Copper Coating)	58
MGMN 400 LF6018/6118	Universal Grade (Copper Coating)	64
MGMN 500 LF6018/6118	Universal Grade (Copper Coating)	99
SDMT 120512 LF6018/6118	Universal Grade (Copper Coating)	94
APMT 1135 M2 LF6018/6118	Universal Grade (Copper Coating)	58
APMT 1604 M2 LF6018/6118	Universal Grade (Copper Coating)	72
RDMT 1204 LF6018/6118	Universal Grade (Copper Coating)	66
RDMT 10T3 LF6018/6118	Universal Grade (Copper Coating)	61
TNMA 160404/08/12 LF3018	Casting Grade	83
CNMA 160404/08/12 LF3018	Casting Grade	94
WNMA 160404/08/12 LF3018	Casting Grade	94
TNMG 160404/08/12 LF3018	Casting Grade	86
CNMG 160404/08/12 LF3018	Casting Grade	97
WNMG 160404/08/12 LF3018	Casting Grade	97